



NETWORK MANAGEMENT ARCHITECTURES

Aiko Pras

pras@cs.utwente.nl

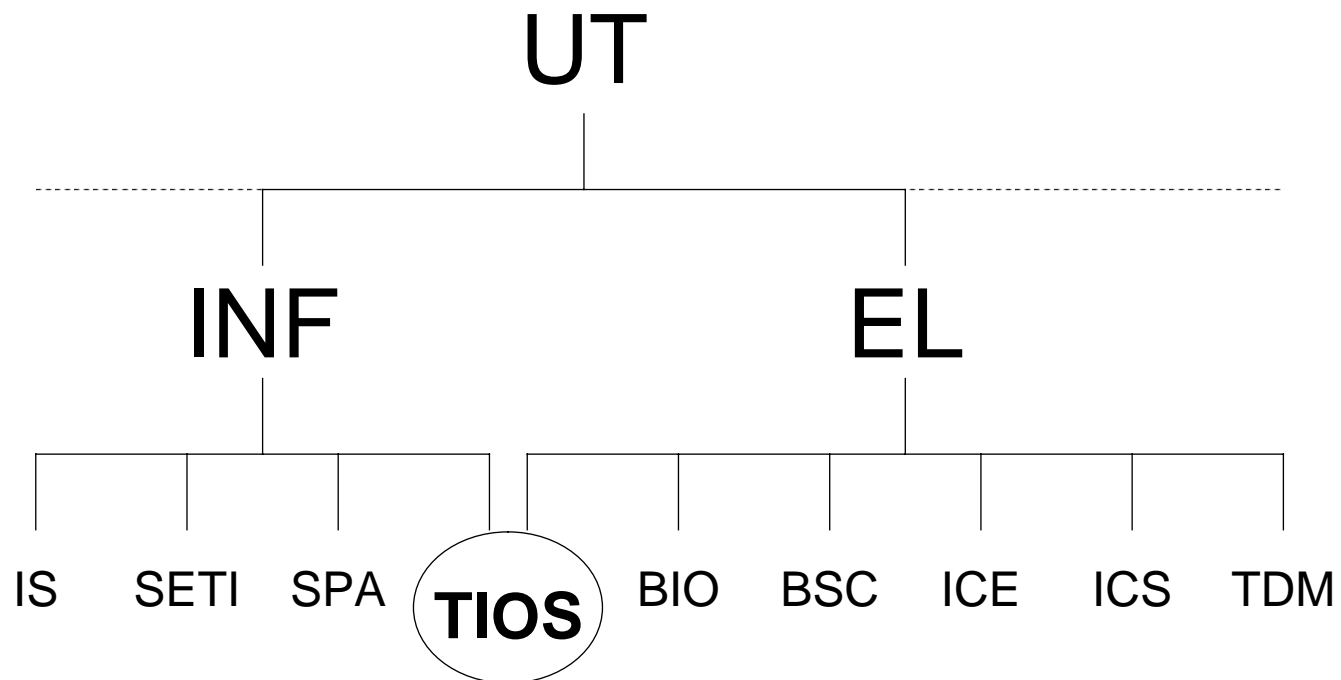
<http://www.tios.cs.utwente.nl/~pras>

<http://www.snmp.cs.utwente/>

PRESENTATION AT CAP-VOLMAC
11 September 1995



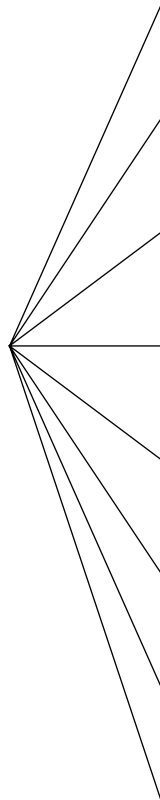
TIOS and the UT





ORGANIZATION TIOS

TIOS



ARCHITECTURE (VISSERS)

FORMAL METHODS (BRINKSMA)

TOOLS (ALBLAS)

QUANTITATIVE METHODS (NICOLA)

APPLICATION PROTOCOLS (MICHIELS)

COMMUNICATION PROTOCOLS (NIEMEGEERS)

TRANSMISSION (VAN ETTEN)

OPERATIONAL ASPECTS & MANAGEMENT (BAKKER)



OPERATIONAL ASPECTS & MANAGEMENT

MEMBERS:

- KEES BAKKER (PART-TIME PROFESSOR)
 - AIKO PRAS (RESEARCHER)
- ERIC VAN HENGSTUM (SOFTWARE ENGINEER)
- HARRIE HAZEWINKEL (PROJECT RESEARCHER)
 - MANY STUDENTS

PROJECTS:

- UT-SNMPv2 (internal)
- ATM MANAGEMENT (SURFNET-4)
 - WWW MANAGEMENT (EC)
- HIERARCHICAL MANAGEMENET (EC?)



SNMPv2 PROJECT

WHY SUCH PROJECT?

- GET PRACTICAL EXPERIENCE
 - IMPROVE KNOWLEDGE OF PROTOCOL IMPLEMENTATION
- IMPROVE EXTERNAL CONTACTS

WHY SNMPv2?

- EASY PARTICIPATION
- MORE THAN PAPERWARE

RESULTS:

- RELEASE 4
- WORK HAS BECOME WELL-KNOWN WITHIN THE INTERNET COMMUNITY



NETWORK MANAGEMENT ARCHITECTURES

THESIS:

THERE IS NO PRINCIPLE DIFFERENCE
BETWEEN THE DESIGN OF PRIMARY FUNCTIONS
AND THE DESIGN OF MANAGEMENT FUNCTIONS



NETWORK MANAGEMENT ARCHITECTURES

IMPLICATION:

IT SHOULD BE POSSIBLE TO MODEL
BOTH KIND OF FUNCTIONS
AS PART OF A SINGLE ARCHITECTURE



NETWORK MANAGEMENT ARCHITECTURES

existing approach

architecture
for primary
network
functions

+

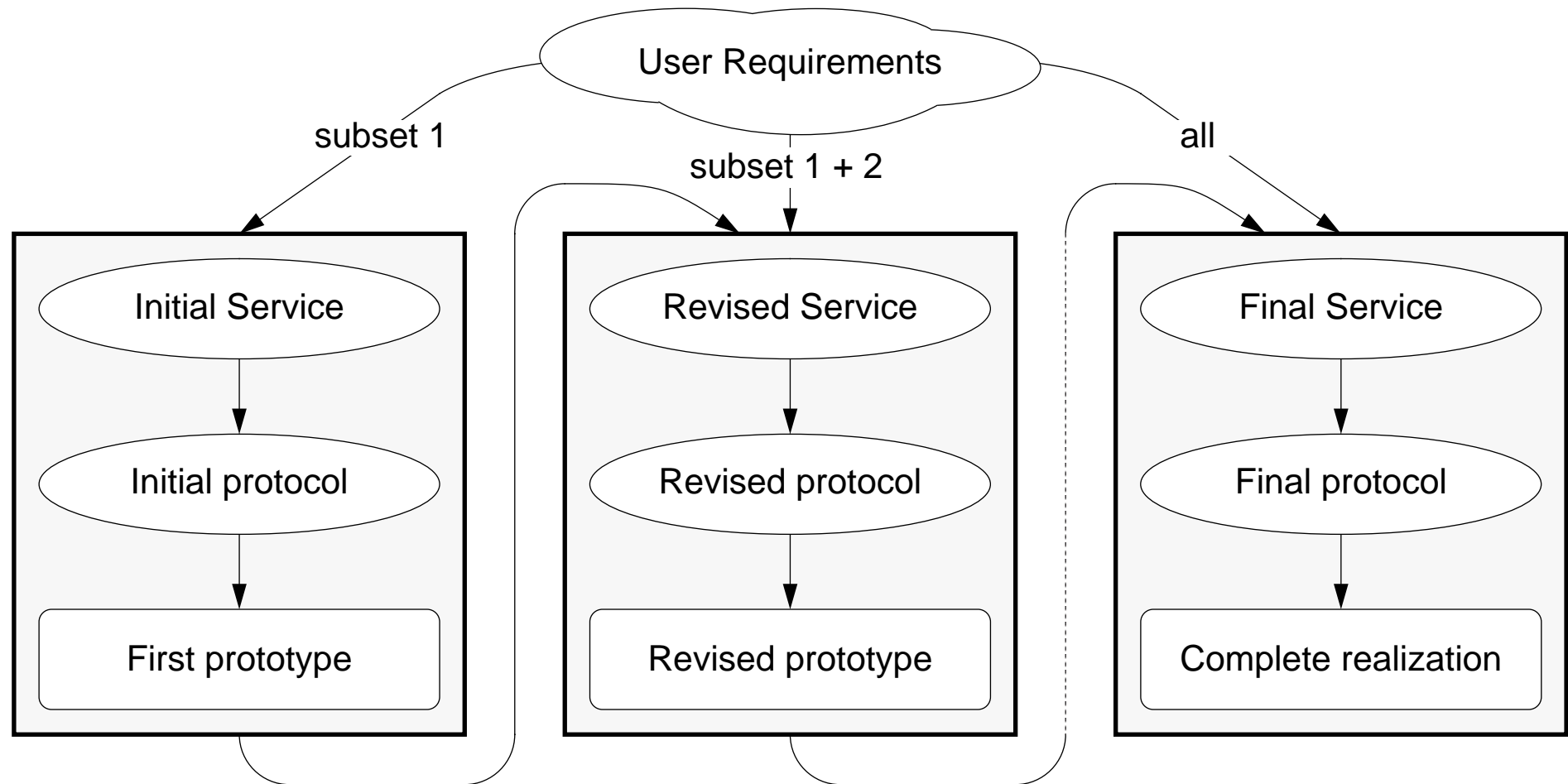
architecture
for
management
functions

*approach followed
by my thesis*

integrated architecture
for
primary & management
functions

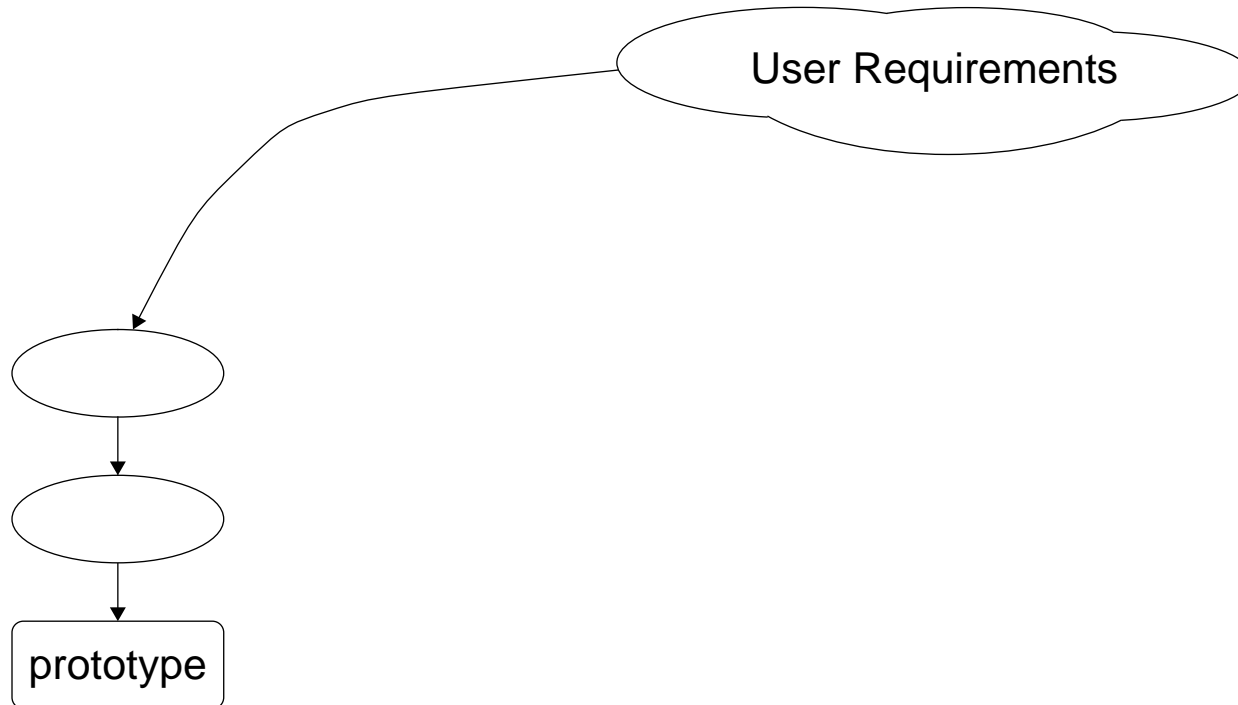


MANAGEMENT AS PART OF THE DESIGN PROCESS



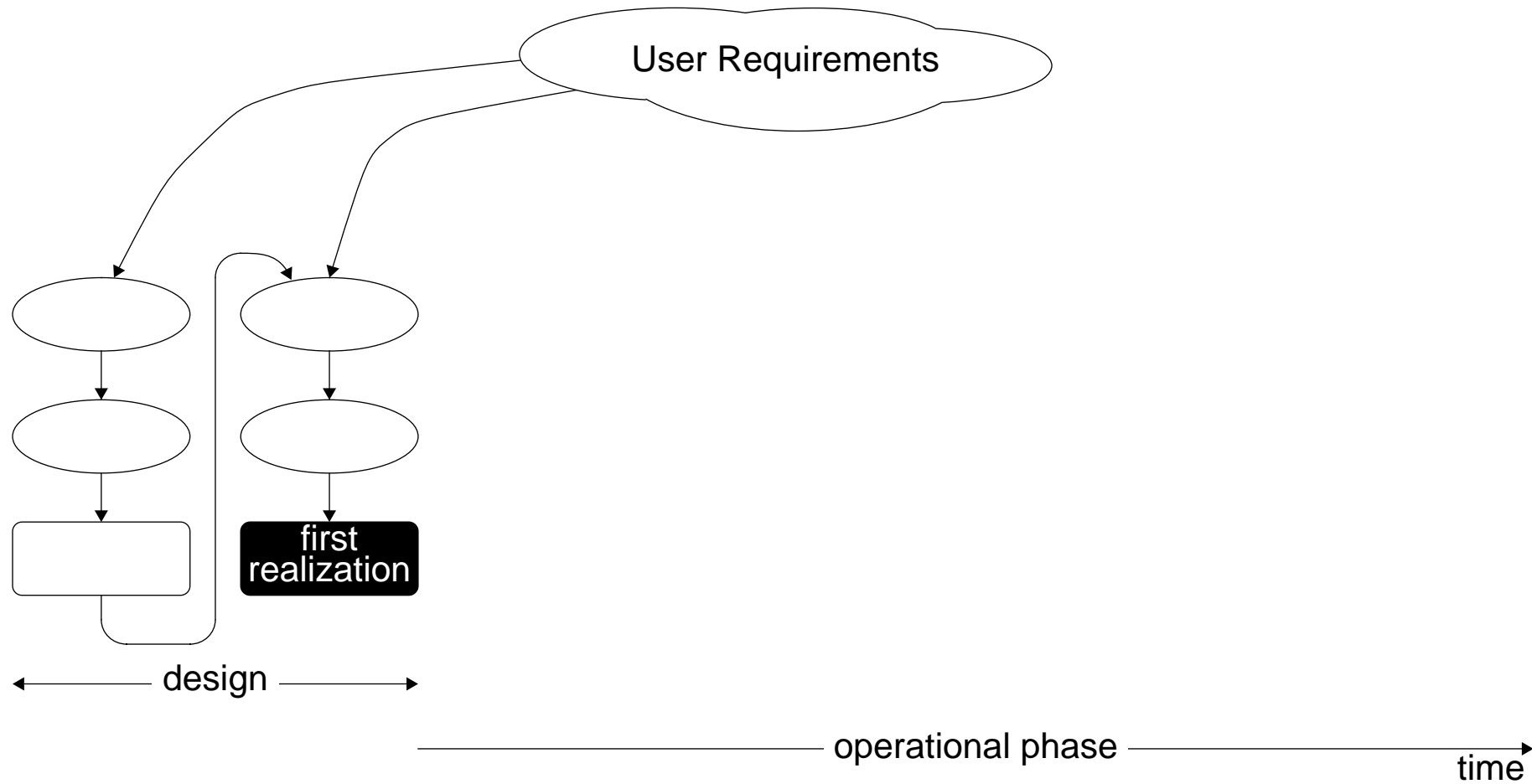


MANAGEMENT AS PART OF THE DESIGN PROCESS



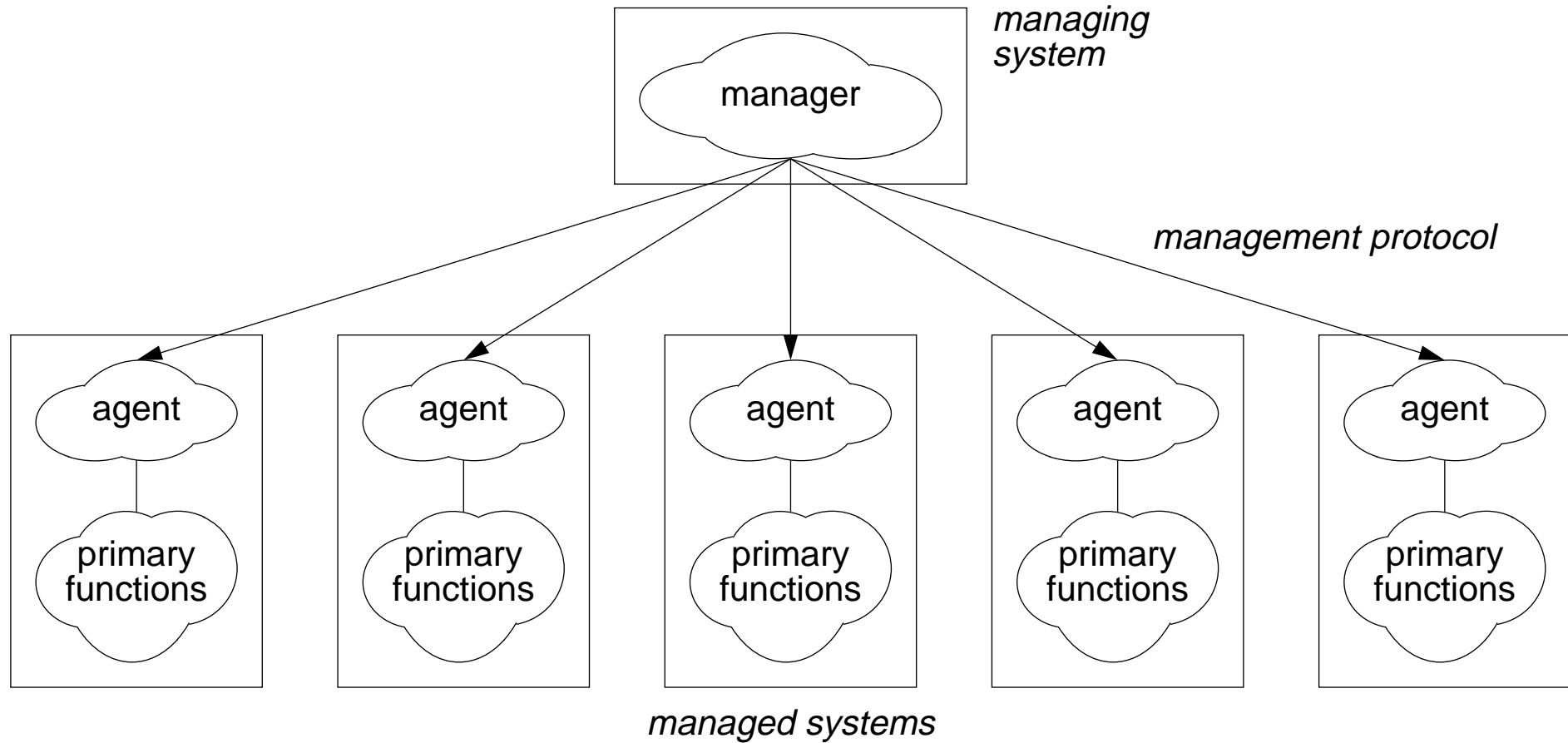


MANAGEMENT AS PART OF THE DESIGN PROCESS



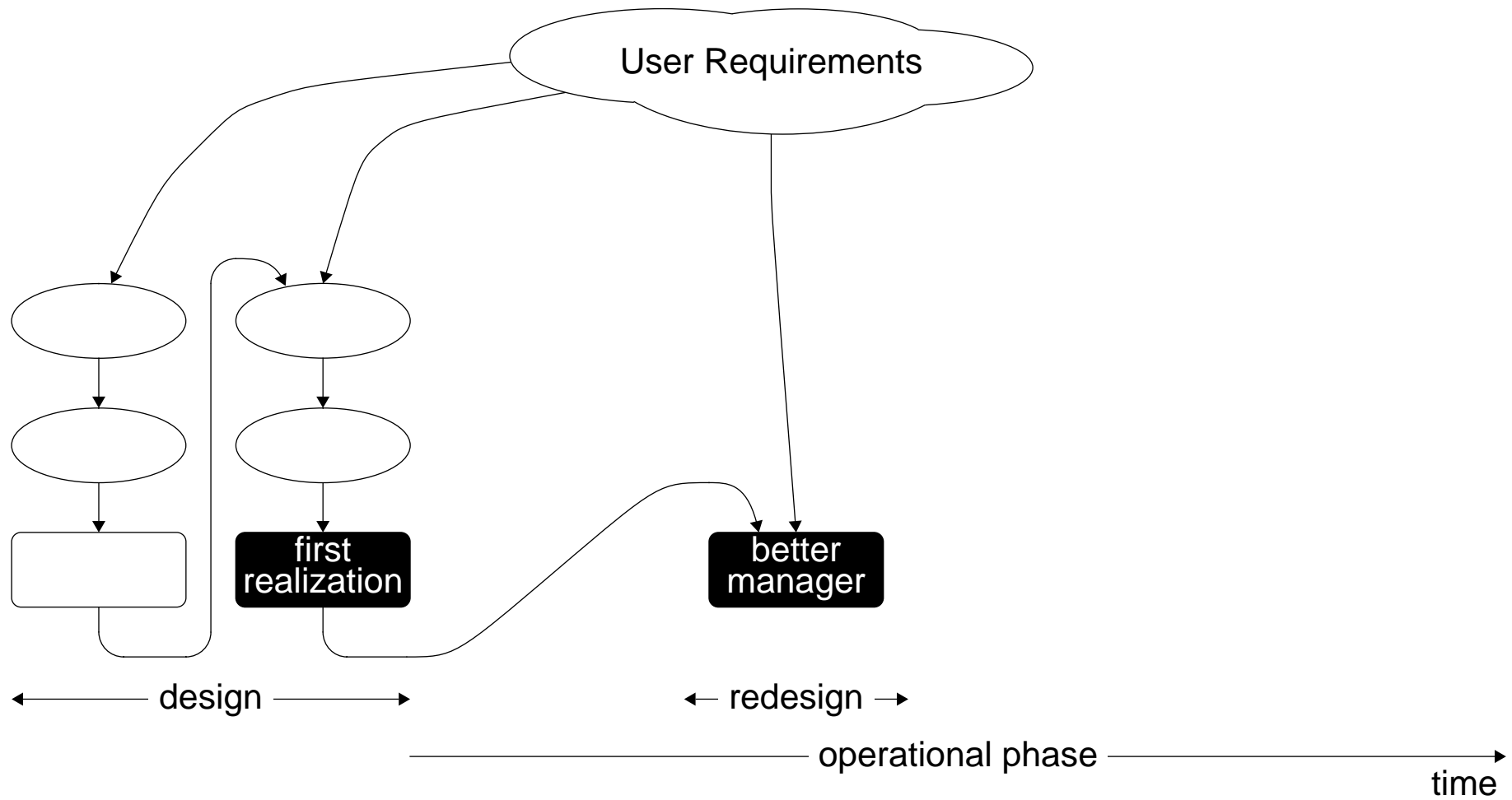


MANAGEMENT AS PART OF THE DESIGN PROCESS



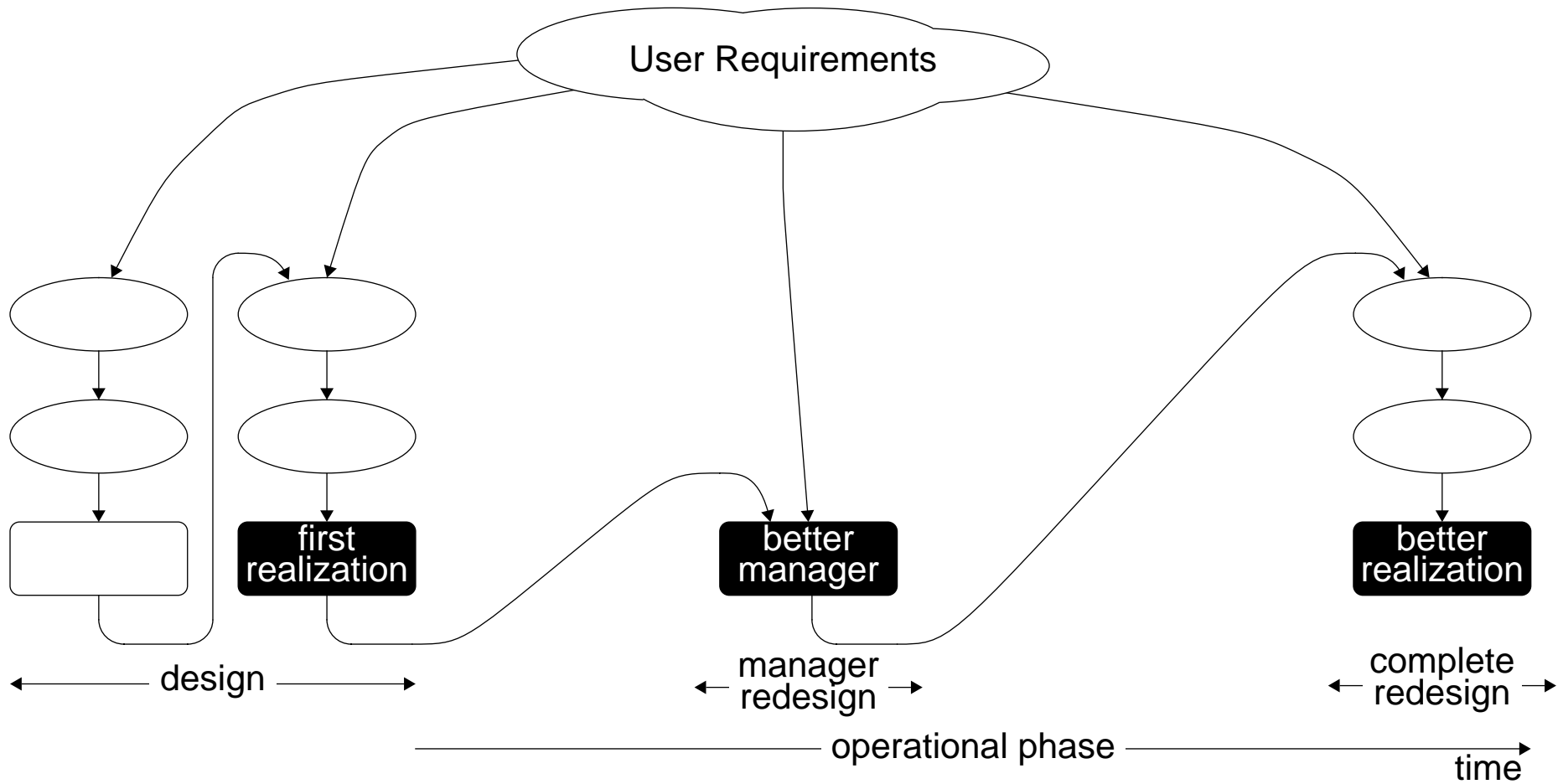


MANAGEMENT AS PART OF THE DESIGN PROCESS



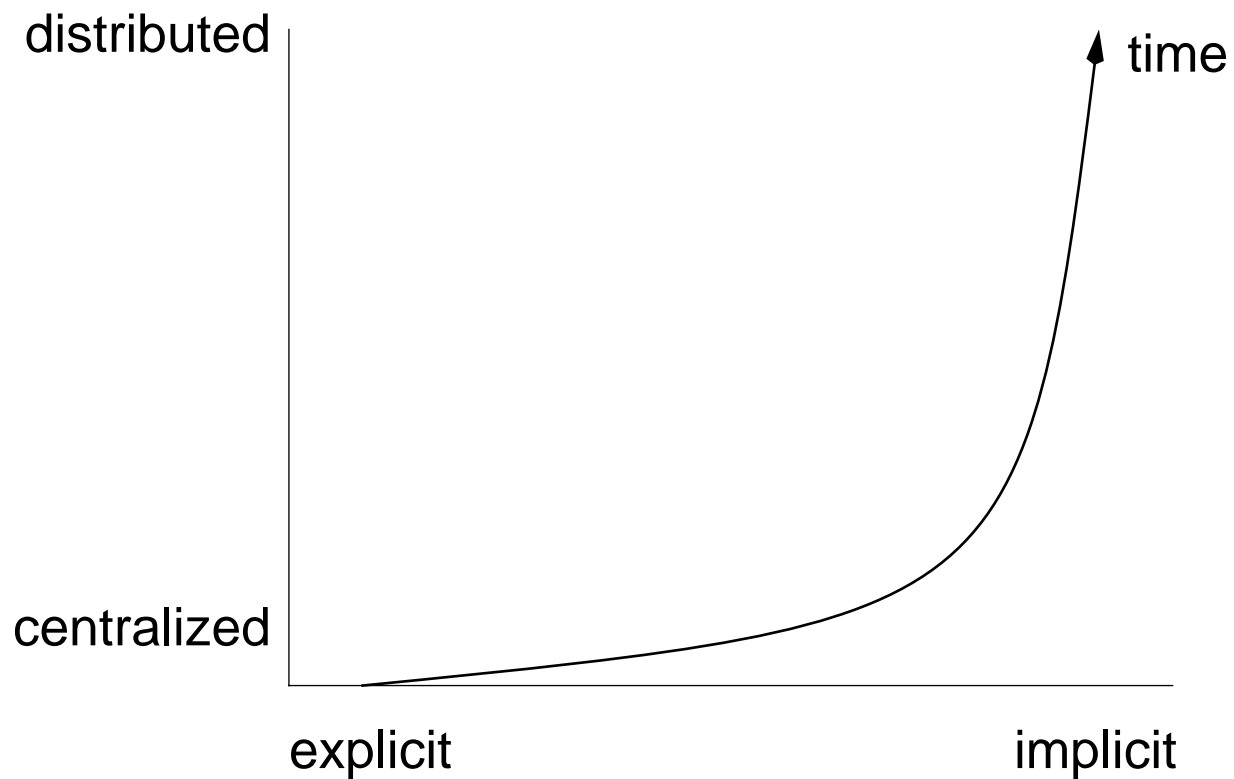


MANAGEMENT AS PART OF THE DESIGN PROCESS



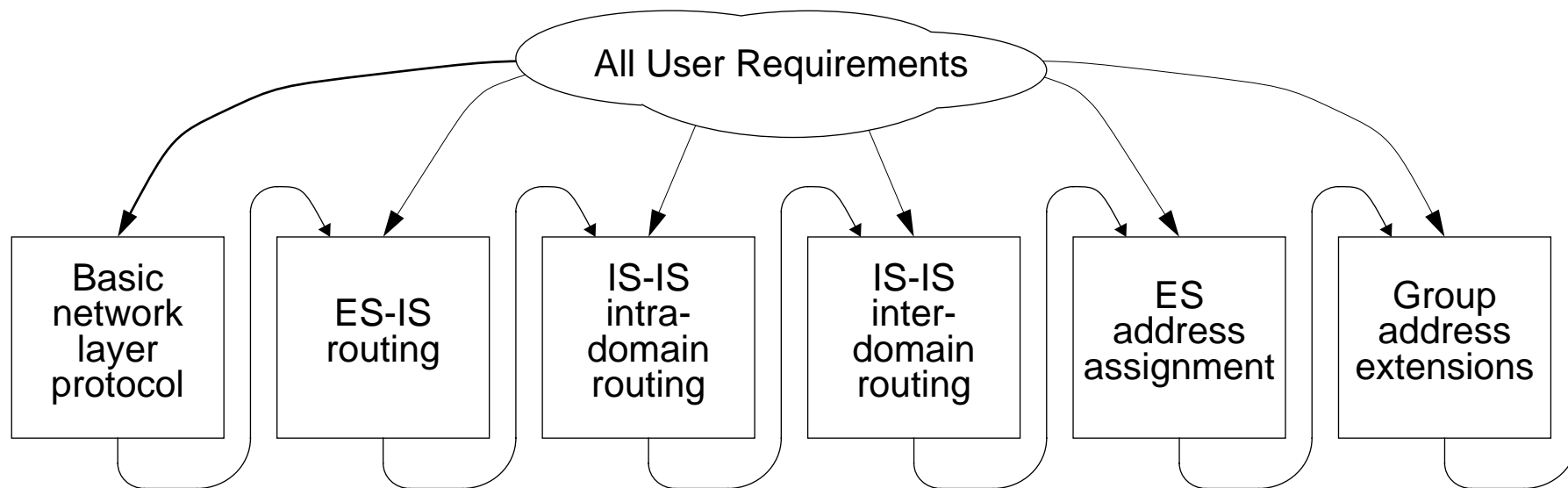


MANAGEMENT AS PART OF THE DESIGN PROCESS



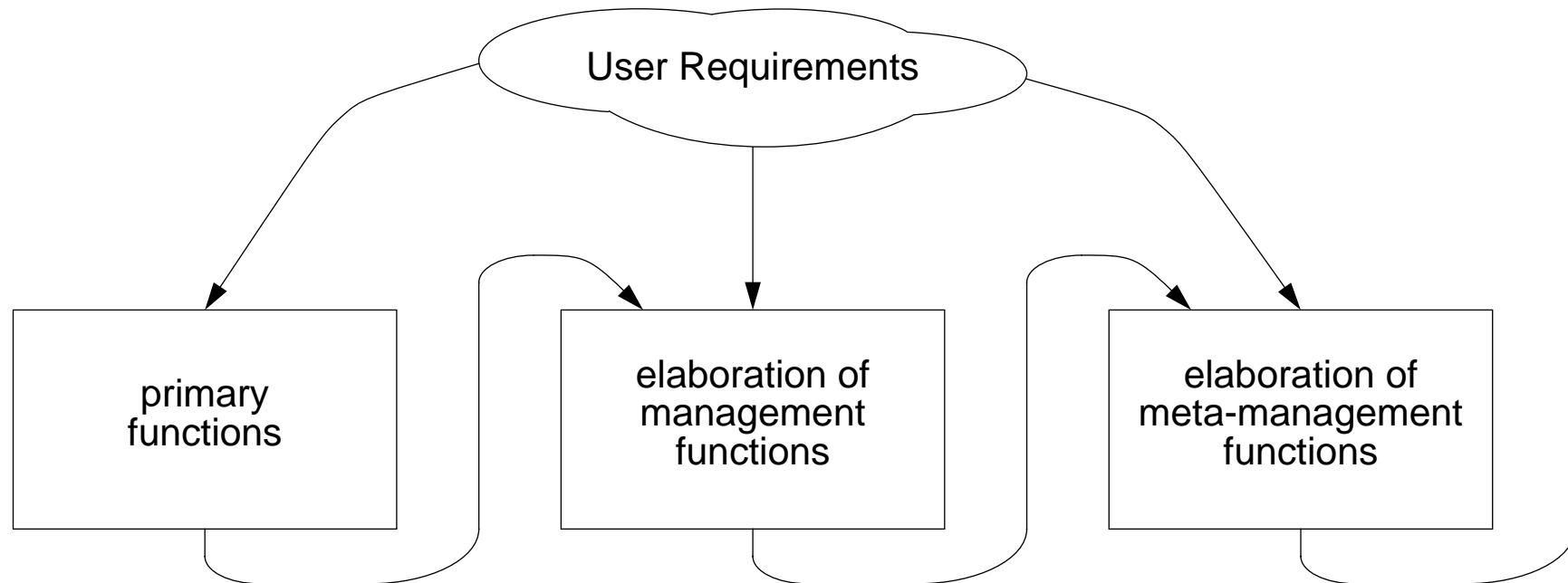


MANAGEMENT AS PART OF THE DESIGN PROCESS



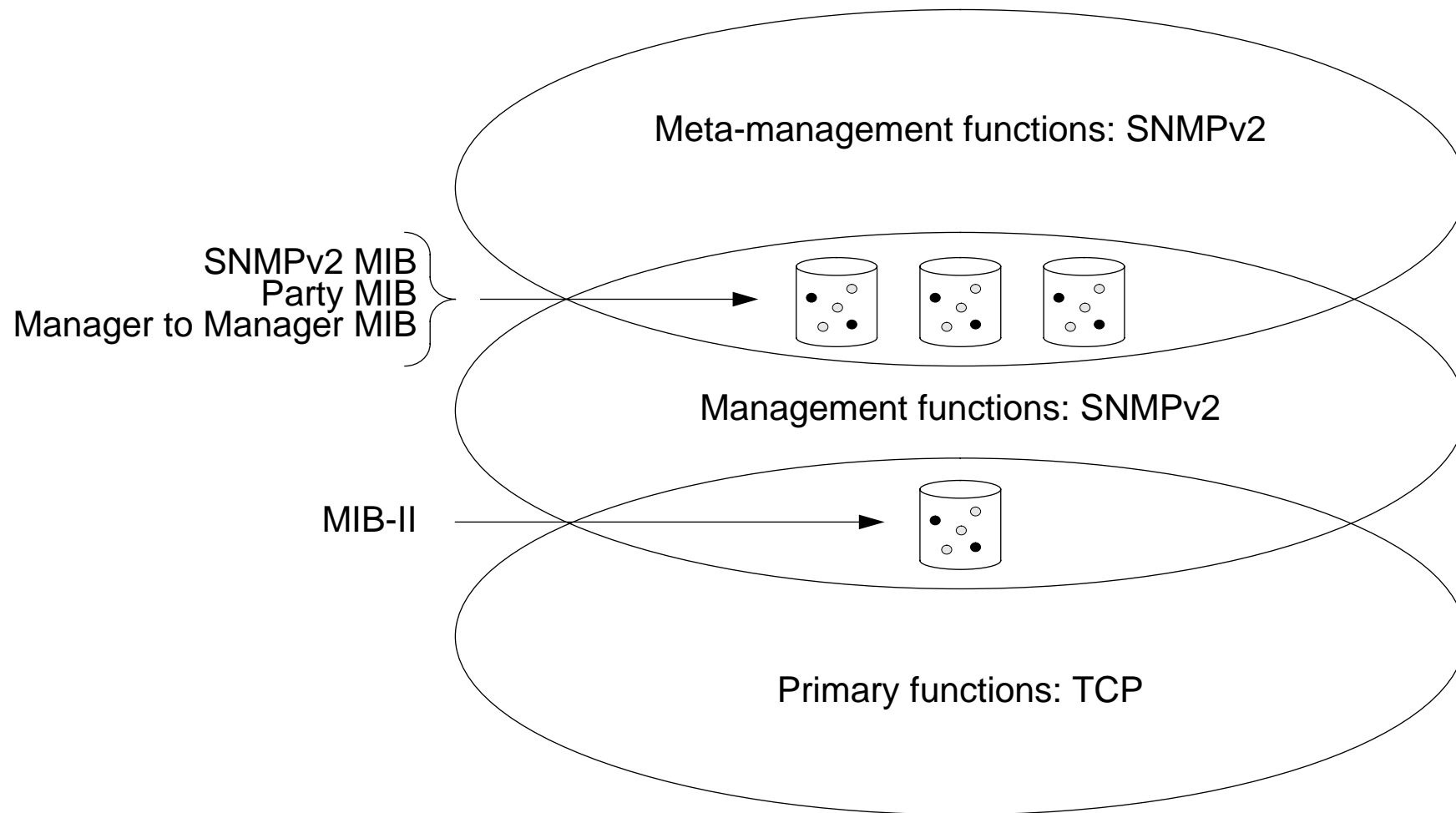


MANAGEMENT AS PART OF THE DESIGN PROCESS



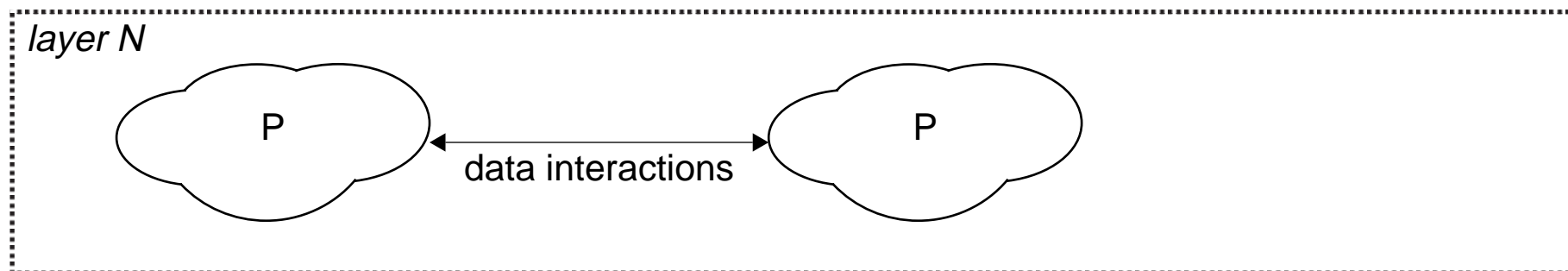


MANAGEMENT AS PART OF THE DESIGN PROCESS



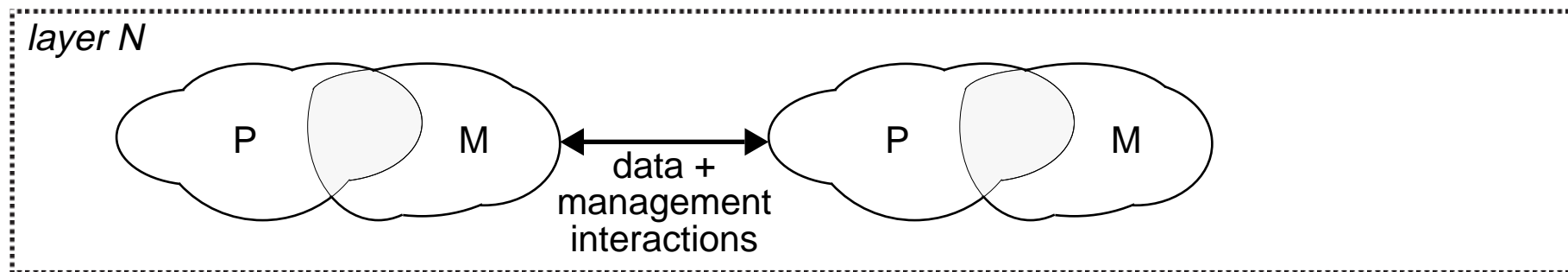


A PROTOCOL MANAGEMENT ARCHITECTURE



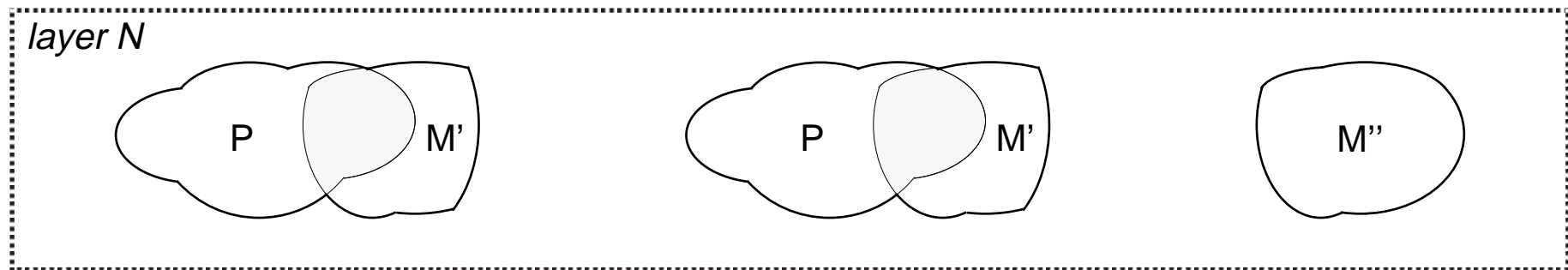


A PROTOCOL MANAGEMENT ARCHITECTURE



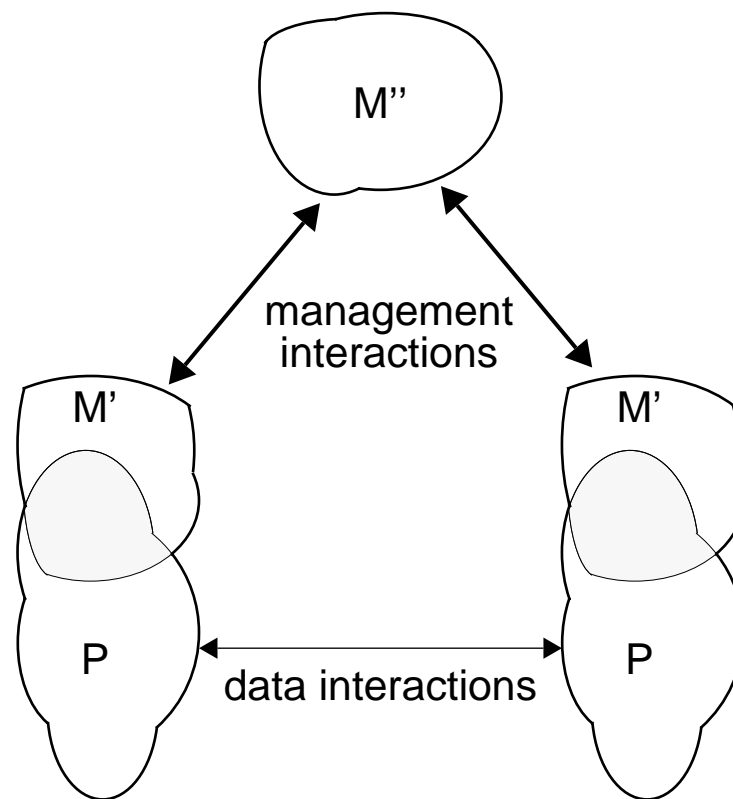


A PROTOCOL MANAGEMENT ARCHITECTURE



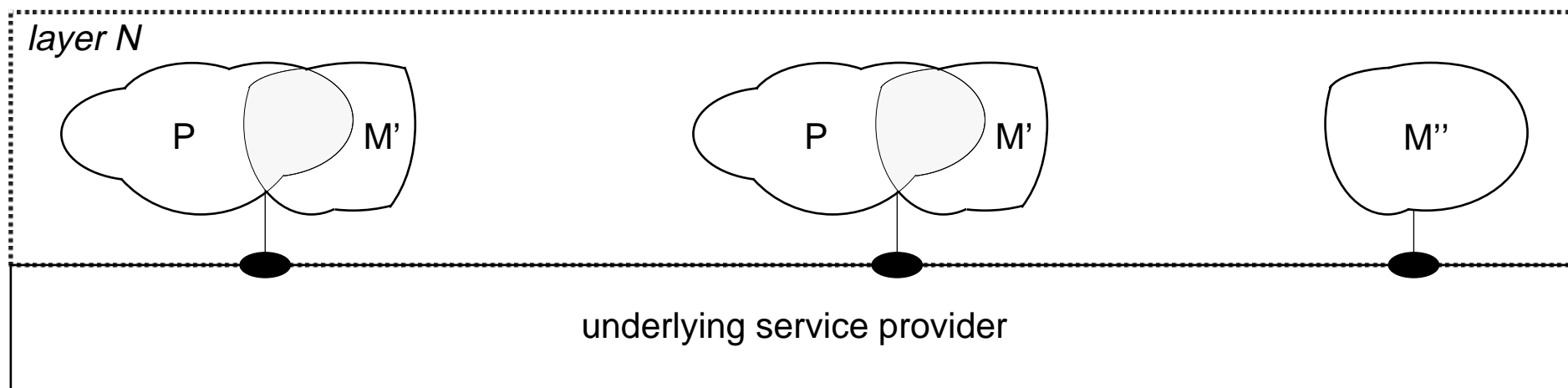


A PROTOCOL MANAGEMENT ARCHITECTURE



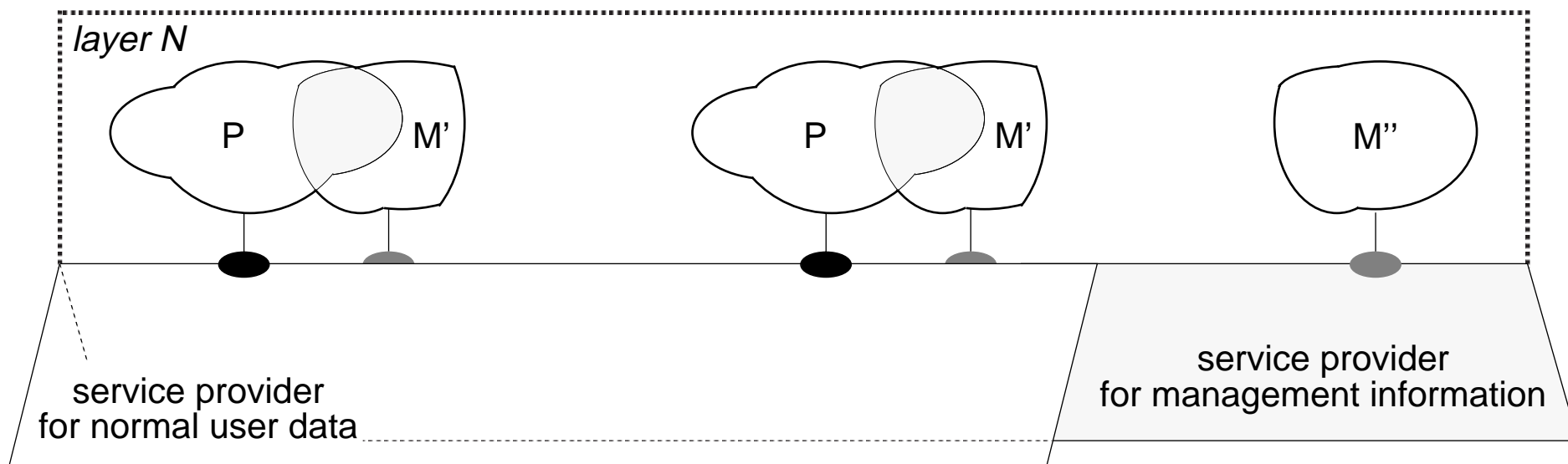


A PROTOCOL MANAGEMENT ARCHITECTURE





A PROTOCOL MANAGEMENT ARCHITECTURE





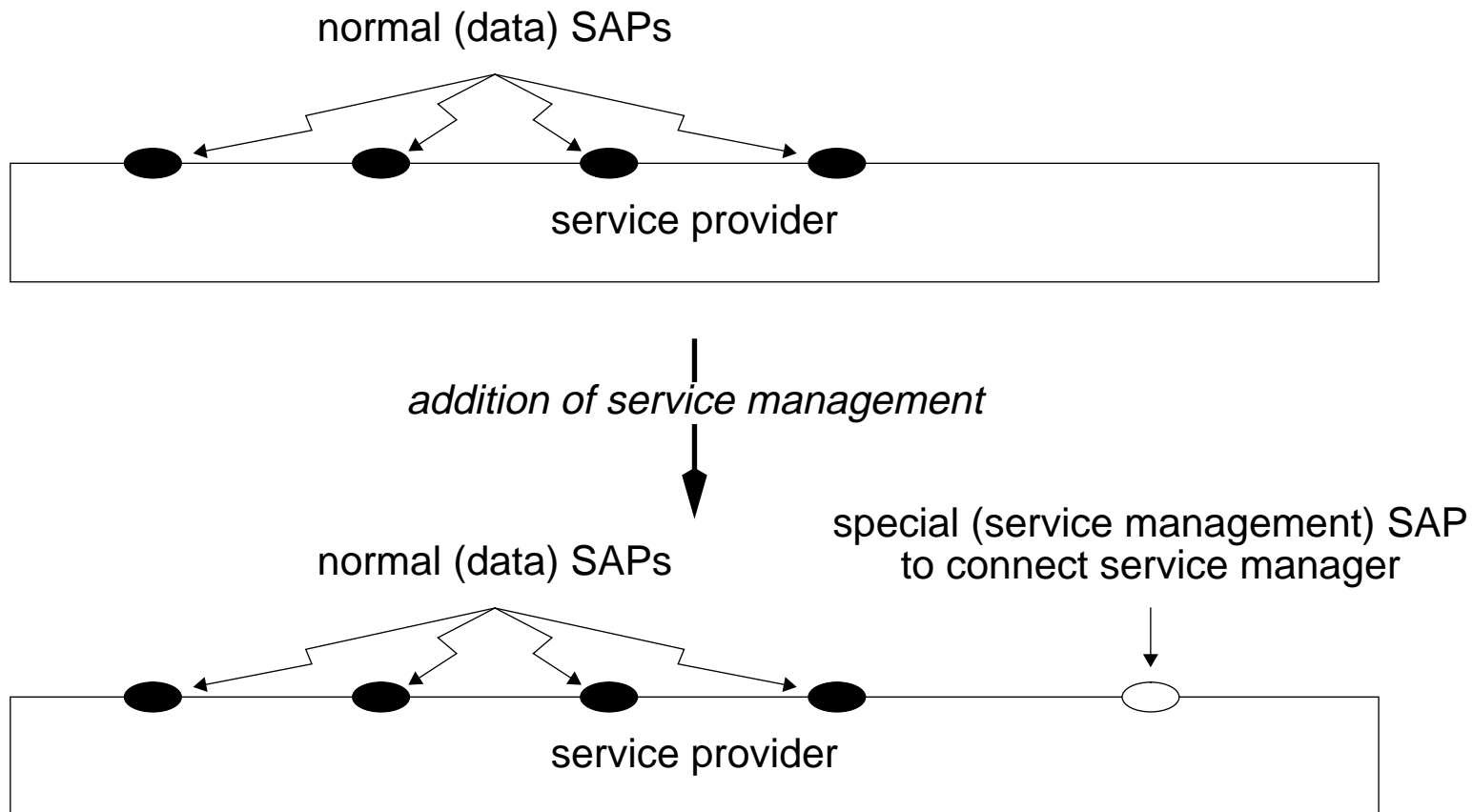
MULTIPLE MANAGEMENT ARCHITECTURES

- SERVICE MANAGEMENT
- PROTOCOL MANAGEMENT
- ELEMENT MANAGEMENT

SIMILAR IDEAS AS TMN
BETTER FORMALIZED



SERVICE MANAGEMENT ARCHITECTURE





SERVICE MANAGEMENT ARCHITECTURE

